



NAUBER[®]
MAQUINAS

ISO 9001
BUREAU VERITAS
Certification



COMPLETE LINE

Construction and
industrial line equipments



A LOT OF NEWS
FOR YOU



2023

PAINTING EQUIPMENTS



220V / 50-60Hz



Included items



MPP-180

Airless system with daily production capacity of up to 1,000m² of painting. Indicated for paintings in general, acrylics, enamels, latex. Power of 1.3 HP. Pump capacity up to 1.8 LPM. Includes 15m hose kit, spray gun, extended pole, airless tip for acrylic paint. (code 2)



BRUSHLESS MOTOR



220V / 50-60Hz

COMPACT VERSION MPP-240X

Airless system with daily production capacity of up to 1,300m² of painting. Indicated for painting in general, acrylics, enamels, latex and epoxy. Power of 1.9 HP. Pump capacity up to 2.4 LPM. Includes 15m hose kit, spray gun, extender, airless tip for acrylic paint. (code 1426)

Included items



VERSION WITH CART MPP-240XH

(cód. 1427)

Included items



220V / 50-60Hz



BRUSHLESS MOTOR



220V / 50-60Hz

Included items



MPP-500

Airless system with daily production capacity of up to 1,500m² of painting and up to 1,000m² of putty. Indicated for paintings in general, acrylics, enamels, latex, epoxy, spackle, acrylic and other medium density materials. Power of 2.7 HP. Pump capacity up to 5.0 LPM. Includes 15m x 3/8 hose kit, spray gun with filter, extender, putty airless tip and paint airless tip. (code 10)



WITH VOLTAGE CONTROLLER



BRUSHLESS MOTOR



NEW!

220V / 50-60Hz

Included items



WITH VOLTAGE CONTROLLER



WITH ELECTRONIC PRESSURE CONTROL PANEL



MOTORED IN BRAZIL



NEW!

220V / 50-60Hz

Included items



BRUSHLESS MOTOR



WITH ELECTRONIC PRESSURE CONTROL PANEL



WITH VOLTAGE CONTROLLER



HONDA MOTOR 200CC



NB-7900

Airless system with daily production capacity of up to 1,500m² of paint and spackle. Indicated for paints in general, acrylics, enamels, epoxy, spackling and acrylic putty in general and other high-density materials. Power of 6.5 HP. Pump capacity up to 8.3 LPM. Possibility of working with up to 90m of hose (horizontal), and two spray guns for painting work (sold separately). (code 94)

PUTTY AND PAINTING



PAINTING EQUIPMENTS



D-3.0X

Airless painting equipment indicated for painting in civil construction with acrylic paints, latex, enamels, varnishes and water-based sealers. Allows occasional use in solvent-based paints.

Not indicated for the use of industrial products.

Equipped with a 220 volt induction electric motor. Power: 1300 Watts - 1.8 HP; Flow - 3.0 LPM; Maximum Nozzle Size: 0.027"; Max hose length: 60m (horizontal); Maximum Pressure: 3,000 PSI. (code 1638)

220V / 50-60Hz

Included items



Included items



D-3.0

Airless diaphragm system with daily production capacity of up to 1,300m² of painting. Suitable for residential and commercial projects. Power of 1.8 HP. Pump capacity up to 3.0LPM. Includes 15m hose kit, spray gun, extended pole, airless tip for acrylic paint. (code 793)

220V / 50-60Hz



Included items



D-5X

Airless painting equipment indicated for painting in civil construction with acrylic paints, latex, enamels, varnishes and water-based sealers. For occasional use in solvent-based paints.

Not indicated for the use of industrial products.

Equipped with a 220 volt induction electric motor. Potency: 3.0 HP; Flow - 5.0 LPM; Maximum Nozzle Size: 0.029"; Maximum hose length: 60m (horizontal); Maximum Pressure: 3,000 PSI; (code 2916)

220V / 50-60Hz



NEW!



D-3.0X MAX

Airless painting equipment indicated for painting in civil construction with acrylic paints, latex, enamels, varnishes and water-based sealers. For occasional use in solvent-based paints. Reservoir made of PVC, with a capacity of up to 30 liters. **Not indicated for the use of industrial products.**

BENEFITS:

- Ease of suction;
- Allows you to work with up to 2 spray guns simultaneously (painting).

(code 2914)

220V / 50-60Hz



Included items



D-3.0 MAX

Reservoir made of PVC, with a filter system at the top. Reservoir capacity of 30 liters. Coupling connection with machine in INOX steel. With ink straining screen.

BENEFITS:

- Ease of suction;
- Superior screen that facilitates the preparation of the material with quality;
- Allows you to work with up to 2 spray guns simultaneously (painting).

(code 2100)

220V / 50-60Hz



Included items



D-5X MAX

Airless painting equipment indicated for painting in civil construction with acrylic paints, latex, enamels, varnishes and water-based sealers. For occasional use in solvent-based paints. Reservoir made of PVC, with a capacity of up to 30 liters.

Not indicated for the use of industrial products.

BENEFITS:

- Ease of suction;
- Allows you to work with up to 2 spray guns simultaneously (paint).

(code 2917)

220V / 50-60Hz



Included items



N-3i

Airless painting equipment with diaphragm system, with a power of 1.8 HP. Pump capacity up to 3.0 Liters/min. Includes 15 meter hose kit, Ultra spray gun, extended pole, airless tip n° 517. (code 1988)

220V / 50-60Hz



Included items



N-4i

Airless painting equipment with diaphragm system, with a power of 1.8 HP.

Pump capacity up to 3.8 Liters/min. Includes 15 meter hose kit, Ultra spray gun, extended pole, airless tip n° 517. (code 1987)

220V / 50-60Hz



Included items



N-4i MAX

Airless painting equipment with diaphragm system, with a power of 1.8 HP.

Pump capacity of up to 3.8 Liters/min.

Reservoir in PVC, with filter system in the upper part. Reservoir capacity of 30 liters.

Coupling connection to the machine in INOX steel. With ink straining screen.

BENEFITS:

- Ease of suction;
- Superior screen that facilitates the preparation of the quality material;
- Possibility of working simultaneously with 2 spray guns. Includes 15 meter hose kit, Ultra Industrial spray gun, extended pole, airless tip n° 517. (code 1986)

220V / 50-60Hz



PAVEMENT MARKING EQUIPMENTS



MPP-500 LINE

Airless equipment with piston system. Indicated for road demarcation, marking of parking lots, garages, cycle paths and paving. Equipped with a Honda 4-stroke gasoline engine. Power of 160CC. Pump capacity up to 5.0LPM. 15 meter hose kit included, 2 spray guns and airless tip kit. (code 120)

This equipment can be used for real estate painting due to its mobility and also because it has a hose extension of 15 meters.



NEW!



Can be used for conventional airless painting



N-3i LINE

Airless equipment with diaphragm system. Indicated for road demarcation, marking of parking lots, garages, cycle paths and paving. Equipped with a Honda 4-stroke gasoline engine. Power of 160CC. Pump capacity up to 3.0LPM. (code 2550)

Includes 10 meter hose kit, 1 Nauber Ultra spray gun and 215 airless tip.

NEW!



D-5X LINE

Airless equipment with diaphragm system. Indicated for road demarcation, marking of parking lots, garages, bike lanes and paving. Equipped with a Honda 4-stroke gasoline engine. Power of 160CC. Pump capacity up to 5.0LPM. (code 2549)

Includes 10 meter hose kit, 1 Nauber Ultra spray gun and 215 airless tip.



Can be used for conventional airless painting



PAVEMENT MARKING

PAINT EQUIPMENTS

PNEUMATIC AIRLESS



EQUIPPED
WITH FILTER
REGULATOR
AND
LUBRICATOR

N-30i

Airless painting equipment with pneumatic motor. Indicated for applications of painting with industrial, synthetic or acrylic paints. Compression Ratio: 30:1 Max flow: 6.0 Liters/min. (code 1048)



EQUIPPED
WITH FILTER
REGULATOR
AND
LUBRICATOR

N-70i

Airless painting equipment with pneumatic motor. Indicated for applications of painting with industrial, synthetic or acrylic paints, with a high concentration of solids. Compression ratio: 70:1 Max flow: 15 Liters/min. (code 1484)



EQUIPPED
WITH FILTER
REGULATOR
AND
LUBRICATOR

N-80i

Airless painting equipment with pneumatic motor. Indicated for applications of painting with industrial, synthetic or acrylic paints, with a high concentration of solids. Compression Ratio: 80:1 Max flow: 25 Liters/min. (code 1532)

PRESSURE TANKS



TP10SA

Painting tank with a capacity of 10 liters, without agitator. Made of steel, with high resistance paint.

Indication of use:

Large paintings, steel structures, wall painting, etc. (code 14)



TP10AM

Painting tank with a capacity of 10 liters, with manual agitator. Made of steel, with high resistance paint.

Indication of use:

Large paintings, steel structures, wall painting, etc. (code 814)



TP10AP

Painting tank with a capacity of 10 liters, with pneumatic agitator. Made of steel, with high resistance paint.

Indication of use:

Large paintings, steel structures, wall painting, etc. (code 15)



N-18

Maximum capacity of transfer: **18 Liters/min.** Max. air pressure: 7 BAR. Material inlet and outlet: 3/8" NPT. Air inlet and outlet size: 1/4" NPT. Max size grits: 1.5mm. Air consumption: 150 LPM. (code 795)

18
LITERS/MIN.



N-25

Maximum capacity of transfer: **25 Liters/min.** Max air pressure: 7 BAR. Material inlet and outlet: 3/8" NPT. Air inlet and outlet size: 1/4" NPT. Max size grits: 1.5mm. Air consumption: 200 LPM. (code 796)

25
LITERS/MIN.



N-40

Maximum capacity of transfer: **40 Liters/min.** Max air pressure: 7 BAR. Material inlet and outlet: 1/2" NPT. Air inlet and outlet size: 1/4" NPT. Max size grits: 3.0mm. Air consumption: 350 LPM. (code 797)

40
LITERS/MIN.

MEMBRANE PUMPS

PROJECTION EQUIPMENT

2,000m² of dough per day!

NB-100

Projector machine for high viscosity putties, textures, projection putties, leveling putty, spackling and acrylic putty. Complete system, with built-in compressor. (code 83)

PROJECTION SYSTEM COMPLETE

MOTORIZATION AND ELECTRONICS



3 HP OF POWER

Projects up to 12.5 kg of mass per minute. Reservoir for 50Kg of material.

WITH REMOTE CONTROL

ON/OFF function and boost or speed reduction.

PROTECTION GRID AND SAFETY SENSOR



AIR COMPRESSOR DRY WITHOUT OIL



Comes with Projection Gun Model L1

Included items



1,500m² of dough per day!

NEW!

NB-80

Mass and texture projection machine, with a screw pump system and equipped with a remote control system.

1.5 HP of power. Projects up to 8Kg of mass per minute. Indicated for high viscosity putties, cementitious, textures, projection putties, leveling putty, spackling putty, acrylic putty and other finishing materials. (code 2830)



MOTORIZATION AND ELECTRONICS



RESERVOIR WITH CAPACITY FOR UP TO 30KG OF MATERIAL

WHEELS TO MAKE IT EASY THE TRANSPORT

Comes with Projection Gun Model L1



Included items

NEEDS A COMPRESSOR
(Nominated compressor: from 6PCM)



220V / 50-60Hz



MASS AND TEXTURE PROJECTION

RESERVOIR

NEW!



N-BOX 60

Reservoir for coupling in Nauber Airless Equipment MPP-500 / MPP-600 / MPP-800. Provides more practicality and autonomy in the supply of your airless equipment. Made of high quality PVC. Capacity of up to 60 liters. With wheels for transportation. (code 11)

MORTAR



AN-50

With a capacity of up to 50 kg of dough. 01 HP of power. It has a selector switch for the direction of rotation, it also operates in automatic mode, changing the direction of rotation according to the determined time. Speed adjustment, emergency button and safety sensor, which automatically turns off the machine when the lid is opened. (code 1174)

220V / 50-60Hz

MIXER



MX-1

Electronic mixer, with 1,400W. With soft start function. 600rpm. (code 68)

WITH 01 STEM

220V / 50-60Hz

EQUIPMENT FOR ASPIRATION



MULTIPURPOSE TURBINE TBN-750

BLOW AND SUCTION



CYCLONE

Cyclone suction system with high-density PVC turbine. Reservoir capacity of 50 Lts. Sealing cap with lock. Suction and aspiration inlet diameter of 45mm. Elaborated to couple in vacuum cleaners that perform suction work of fine dust, such as spackling, wet materials and also for heavy cleaning work. (code 970)



TCA-50

Turbo aspiration equipped with TBN-750 multipurpose turbine and cyclone aspiration system with high-density PVC turbine. Elaborated to attach to vacuum cleaners that perform suction work of fine dust, such as spackling, wet materials and also for heavy cleaning work. (code 2479)

220V / 50-60Hz



Blow and suction function

220V / 50-60Hz

TBN-750

Extremely light and compact multipurpose blow and suction turbine. 750 Watt motor. 15,000RPM rotation. Comes with a dust collection bag. (code 2229)

COMPRESSOR



RAPTOR CAR

Oil-free air unit, equipped with a 2 HP of power, 226LPM flow, noise of only 65 decibels, 140lbs, with double head and universal quick coupling system. With voltage controller module and head depressurization valve. (code 2347)

220V / 50-60Hz

DRYWALL SANDERS



NEW hose more flexible with range of up to 3.8m!



220V / 50-60Hz

LX850-CS

Giraffe type sander, extendable up to 1.65 meters. 225mm disk with dust aspiration system, dispensing with the use of a vacuum cleaner (hose included). With led light. 850W motor. Speed adjustment from 800 to 1700rpm. (code 1107)



trigger activation



220V / 50-60Hz

LXR850-CS

Giraffe type sander, extendable up to 1.65 meters. 225mm disk with dust aspiration system, dispensing with the use of a vacuum cleaner (hose included). With led light. 850W motor. Speed adjustment from 800 to 1700rpm. (code 1166)

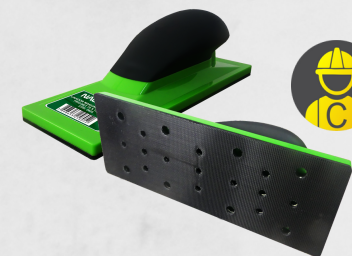


220V / 50-60Hz



LXM-CS

Versatile manual drywall sander, lightweight and with a 180mm disc, with a dust aspiration system, eliminating the need for a vacuum cleaner. 800W motor. Speed adjustment from 1200 to 2300rpm. (code 72)



70X198MM ASPIRATED PRO-NET MANUAL SANDER

Sander with velcro base and multiple holes, with 22mm connection for dust extraction and 70x198mm base. (code 2025)

DRYWALL SANDERS WITH EFFICIENT SYSTEM OF SELF-ASPIRATION AND ADJUSTABLE LEDLIGHT

DRYWALL GRINDER



DRYWALL GRINDER FN-1650



FN-1650

Light and compact drywall grinder. Irreplaceable for carrying out repairs on walls that require surface removal. Equipped with a 125mm diameter milling disc. Brushless motorization (brushless) with a power of 1650 W. It comes with a 1m extension cable. (code 2242)



220V / 50-60Hz

GRINDER DISC 125MM



Equipped with controller module power



AUTOMATIC SPRAY GUNS



A-300

Automatic paint gun with stainless steel fluid passages and has a fan regulator screw with scale. This pistol has the advantages of being highly efficient and easy to maintain.

Air consumption: 340 Lts/min.

Power Type: Pressure

Maximum Inlet Pressure: 5 bar

Indication of Use:

Automotive, industrial painting, etc.

A300 0.8MM (code 1974) / A300 1.0MM (code 1975)

A300 1.3MM (cod. 1976)



NAP-16

Works with up to 3,920PSI.

With ceramic needle, offering high strength.

Possibility of working in series. Fast activation.

Versatile attachment point. Stainless steel front.

Indicated for painting applications with industrial, synthetic, acrylic, PU, lacquer, etc.

(code 1575)



NAUBER INDUSTRIAL SPRAY GUNS



TK100P

1.2/1.4MM

Air connection: 1/4" NPS.

Air consumption: 392 liters/min.

Working air pressure:

3.9 - 4.9 BAR (56 - 71 PSI).

1.2mm (code 2161) 1.4mm (code 2162)



TK200P

Air connection: M 1/4" NPS.

Air consumption: 226 liters/min.

Working air pressure: 2 BAR (29 PSI).

(code 2164)



TK200P 3/8

Air connection: M 1/4" NPS.

Air consumption: 226 liters/min.

Working air pressure: 2 BAR (29 PSI).

(code 1001)



TAKAMATSU INDUSTRIAL SPRAY GUNS

TAKAMATSU



TK200CG NYLON

Air connection: M 1/4" NPS.

Air Consumption: 226 liters/min.

Working air pressure: 2 BAR (29 PSI).

Mug Capacity: 600ml. (code 1241)



TK200CG MP

Air connection: M 1/4" NPS.

Air Consumption: 226 liters/min.

Working air pressure: 2 BAR (29 PSI).

Mug Capacity: 600ml. (code 1004)



TK302CG

Air connection: M 1/4" NPS.

Air Consumption: 160 liters/min.

Working air pressure: 0.7 - 2.0 BAR (10.1526 - 29.0075 PSI).

Mug Capacity: 100ml. (code 1002)



TK200CS

Air connection: M 1/4" NPS.

Air Consumption: 226 liters/min.

Working air pressure: 2 BAR (29 PSI).

Mug Capacity: 1000ml. (code 1003)



TK200CG LVLP

Air connection: M 1/4" NPS.

Air Consumption: 226 liters/min.

Working air pressure: 2 BAR (29 PSI).

Mug Capacity: 600ml. (code 1000)

COMPLETE PARTS AND ACCESSORIES LINE



AIRLESS SPRAY GUNS



PRO-X

Light spray gun with extremely soft trigger.

Made with alloy thin aluminum.

High level pressure resistance.

Max. pressure of work: 3,625 PSI (250 BAR).

(code 801)



HORIZONTAL

Fitted internal filter system. Ideal for jet-roller painting, as well as ceiling painting in general.

Max Pressure: 3,265 PSI (250 BAR) (code 690)



ULTRA

Spray gun with ceramic needle and tungsten seal, standard 7/8 thread, inlet thread 1/4 standard material.

Withstands pressure up to 3,600 PSI (248) BAR.

(code 1769)



GOLD

Spray gun with lower housing for airless filter, standard 7/8 thread, withstands pressure up to 7,250 PSI (500 BAR).

with swivel hose. (code 1168)



PROFESSIONAL AIRLESS SPRAY GUNS

HIGH PRESSURE RESISTANCE



AIR CONDENSER



NSA-365

Equipment developed for the efficient removal of water condensate.

It works by triple coalescence effect.

Application in compressed air networks and consumption entrances. (code 1775)



PROJECTION SPRAY GUNS



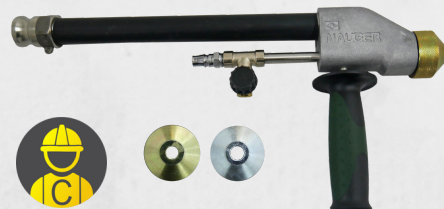
PRO-JECT

Made to carry out works projected mass. PVC tank, 5 liter capacity. 4, 6 and 8mm nozzle included. Work pressure: 3.5 to 5.0 Bar. (code 325)



L1 SPRAY GUN

Made of aluminum, comes with nozzle (options 61, 62, 63, 64) and nozzles 04, 06 and 08mm. Ideal for applying putties (thin layers). (code 1875)



T1 SPRAY GUN

Easy-to-adjust needle nose system. Comes with 3 projection covers in sizes 06, 08 and 10mm. Especially indicated for medium and thick textures. (code 1874)



T1 ABS SPRAY GUN

Body made of ABS. Cover options in sizes 06, 08 and 10mm. Designed for systems mechanized projection.



NB-100 03 NOZZLES SPRAY GUN

Made of highly resistant cast iron with a fine finish. Two finger trigger system. With built-in air register. Comes with 03 nozzle options: 04, 06 and 08mm. (code 324)

TROWELS/SPATULES

NAUBER FLEX TROWELS

Trowels with flexible stainless steel blades that enable high performance and quality in the final finish.

AVAILABLE IN THE FOLLOWING SIZES:

16CM (code 3018) / 25CM (code 1369)
40CM (code 1034) / 60CM (code 1035)
80CM (code 1036) / 100CM (code 1370)
120CM (code 1371)



NEW!



New size available!
16cm

SUPPORT TO NAUBER FLEX TROWELS

Support for NAUBER trowel. With universal thread. (code 1399)



NAUBER STAINLESS STEEL SPATULE MULTIPURPOSE

(code 2005)



NAUBER STAINLESS STEEL SPATULE TRAPEZOID

23X5CM X 13CM
(code 2000)



NAUBER STAINLESS STEEL PLASTER FLAT

24CM X 10CM
(code 1998)



NAUBER STAINLESS STEEL PLASTER FLAT

35CM X 11CM
(code 1999)



NEW!

NAUBER STAINLESS STEEL SPATULE INTERNAL CORNER

(code 2028)



NEW!

NAUBER STAINLESS STEEL SPATULE EXTERNAL CORNER

(code 2029)



NEW!

NAUBER STAINLESS STEEL SPATULE FLAT 60MM

(code 2001)



NEW!

NAUBER STAINLESS STEEL SPATULE FLAT 75MM

(code 2002)



NEW!

NAUBER STAINLESS STEEL SPATULE FLAT 100MM

(code 2003)



NEW!

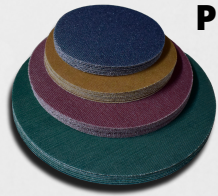
NAUBER STAINLESS STEEL SPATULE FLAT 125MM

(code 2004)



SANDPAPERS

PRO-NET MESH SANDPAPERS



REFERENCE CODES

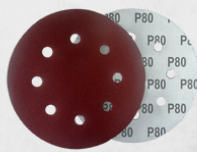
	125MM (5")	150MM (6")	185MM (7")	225MM (9")
G80	1188	1193	1198	1203
G100	1189	1194	1199	1204
G120	1190	1195	1200	1205
G150	2639	2643	2647	
G180	1191	1196	1201	1206
G240	1192	1197	1202	1207
G400	2523	2527	2531	
G600	2524	2528	2532	
G1000	2525	2529	2533	
G1200	2526	2530	2534	
G2000	2640	2644	2648	
G3000	2641	2645	2649	



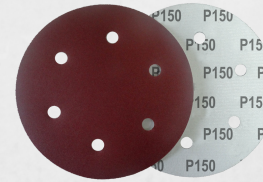
SYSTEM OF
SELF-COOLING AND
FREE PASSAGE TO
THE ASPIRATION



SANDPAPERS



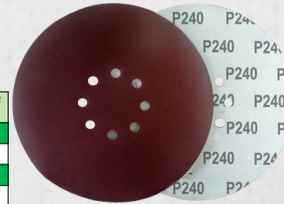
185 MM 7"
8 HOLES



225MM 9"
6 HOLES

REFERENCE CODES

	185MM 8 HOLES	225MM 6 HOLES	225MM 8 HOLES
G80	101	112	93
G100	96	121	23
G120	97	122	25
G150	90	114	24
G180	89	113	26
G220	91	115	22
G240	124	123	21



225MM 9"
8 HOLES

MESH SANDPAPERS 70X198MM

High performance screened sandpaper.
Indicated for sanding acrylic putty,
spackle, masonry, wood, metal and fiber
surfaces.



REFERENCE CODES

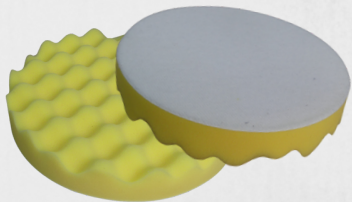
	LIXAS 70 X 198MM
G80	2021
G120	2022
G180	2023
G240	2024



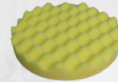
PADS COMPATIBLE WITH
VACUUMED MANUAL SANDER
NAUBER PRO-NET 70X198MM



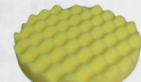
POLISHING DISCS



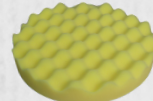
125MM 5"
30MM HEIGHT
(code 2543)



150MM 6"
30MM HEIGHT
(code 2544)



185MM 7"
30MM DE HEIGHT
(code 2545)



Polishing discs with velcro on one side
and foam for polishing on the other side.
High-adhesion Velcro, allowing you to
work at high speeds. Medium density
polishing foam, 30mm high, providing
excellent results.

Indicated for use in the polishing of
decorative surfaces and automotive use.

INTERFACE DISKS

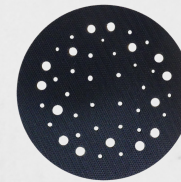
Interface disc with male velcro on one side and female velcro on the other side.
Indicated for protecting the base pad of the equipment and for increasing the height of the plate.

MULTI HOLE DISKS

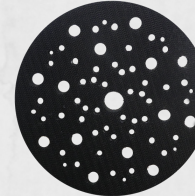
3mm thickness without foam. Multi-hole pattern, compatible
with drywall sanders on the market.
Indicated for protecting the base plate of the equipment and for
increasing the height of the plate by 3mm.

10mm thickness with foam. Multi-hole pattern, compatible with
drywall sanders on the market.
Indicated for protecting the base plate of the equipment and for
increasing the height of the plate by 10mm.

5" 125mm (code 2536)



6" 150mm (code 2537)

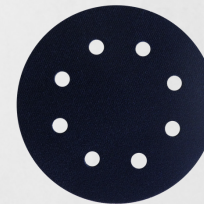


6" 150mm (code 2538)

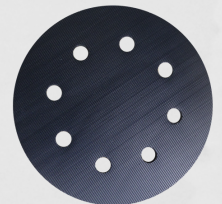


8 HOLES DISKS

3mm thickness without foam.
7" diameter and 8-hole pattern,
compatible with drywall sanders
on the market. Indicated for
protecting the base plate of the
equipment and for increasing the
height of the plate by 3mm.
(code 2539)

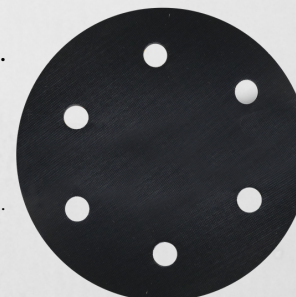


10mm thickness with foam.
7" diameter and 8-hole pattern,
compatible with sanders on the
market.
Indicated for protecting the base
plate of the equipment and for
increasing the height of the plate
by 10mm. (code 2541)

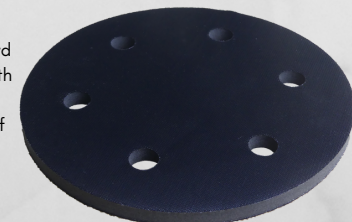


6 HOLES DISKS

3mm thickness without foam.
9" diameter with standard 6
holes, being compatible with
market sanders. Suitable for
protection of the base dish of
the equipment and for
increased plate height by 3mm.
(code 2540)



10mm thickness with foam.
9" diameter and with standard
6 holes, being compatible with
market sanders. Suitable for
protection of the base dish of
the equipment and for
increased plate height by
10mm. (code 2542)



THE INTERFACE DISKS
NAUBER PROVIDE HIGH
PROTECTION TO THE
BASE PAD OF
YOUR DRYWALL SANDER

PLASTIC MASKING FILM

PLASTIC MASKING FILM

For automotive, residential, real estate and industrial painting. Practicality and economy. With electrostatic load, facilitating the film's grip on any surface.

JAPANESE TECHNOLOGY

Available in the following sizes:

45cm x 20mts (code 667)
110cm x 20mts (code 668)
170cm x 20mts (code 669)
240cm x 20mts (code 670)
300cm x 20mts (code 1089)



Filmes de Mascaramento
ISOPAINT

NEW!

**NOW WITH
48MM TAPE!**

Available in the following sizes:

45cm x 20mts (code 2634)
110cm x 20mts (code 2635)
170cm x 20mts (code 2636)
240cm x 20mts (code 2637)
300cm x 20mts (code 2638)



PLASTIC MASKING FILM SUPPORTS

Blue plastic material, with Metallic blade for the prominence of the plastic masking film.

Bigger size to masking films:

45cm x 20mts (fitas 48mm);
110cm x 20mts (fitas 18 e 48mm);
170cm x 20mts (fitas 18 e 48mm);
240cm x 20mts (fita 18mm). (cód. 687)



Smaller size to (masking film 45cm x 20mts - tape 18mm). (code 686)



With high quality 17mm tape to fix the top

AIRLESS FITERS



30 MESH
(code 53)

Suitable for use in material elastomeric, primer, pasta and higher density materials.



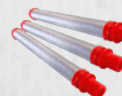
60 MESH
(code 52)

Suitable for use in material heavy latex.



100 MESH
(code 51)

Suitable for use in material Oil, latex, acrylic and enamels.



150 MESH
(code 50)

Suitable for use in stain and lacques.

TIP GUARDS



ALUMINUM TIP GUARD

Pressure: 5,000 psi.
Thread 7/8".
For Airless tips with 11.1mm rod diameter.
(code 969)



STAINLESS STEEL TIP GUARD

Pressure: 7,250 psi.
Thread 7/8".
For Airless tips with 11.1mm rod diameter.
(code 968)



UHD TIP GUARD

Pressure: 7,250 psi.
Thread 7/8".
For Airless tips with Diameter of the rod of 11.1mm. (code 1514)



ACCESSORIES



EXTENDED POLE

for airless spray guns, Made of aluminum.
Available in sizes:
30cm (code 54)
50cm (code 55)
75cm (code 105)
100cm (code 56)
150cm (code 57)



ANGLER CONNECTOR

Airless painting spray gun accessory. Stainless steel and aluminum piece. Facilitates painting in more difficult angles. (code 329)



SWIVEL FREE CONNECTOR

FOR AIRLESS HOSES
Stainless steel part. Light.
Nauber Swivel 1/4 x 1/4 MF (code 685)
Nauber Swivel 1/4 x 3/8 MF (code 1599)
Nauber Swivel 3/8 x 3/8MF (code 1598)



SPRAY GUIDE

Ideal for cutting and painting corners with different shades. (code 138)



AIRLESS HOSES

For high pressure airless system, with double fiber layer. Max. Pressure: 3.300 PSI:
1/4 15 meters (code 104) / 1/4 20 meters (code 19)

Max. Pressure: 3.625 PSI:
3/8 15 meters (code 688) / 3/8 20 meters (code 20)



ALUMINUM STILT

ST 15-23

Aluminum stilt of elevation of 38cm to 60cm, in aluminum. Versatile and safe. Supports up to 102kg. (code 128)

ST 24-40

Aluminum stilt of elevation of 60cm to 100cm, in aluminum. Versatile and safe. Supports up to 102kg. (code 67)



LUBRICATING OIL

Contains basic minerals and additives anti-wear for the lubrication of hydraulic systems. Provides protection against rust and corrosion. Operates at pressures up to 5.000 PSI. Bottles available: 300ml (code 279), 500ml (code 280) e 1.000ml (code 281).



PAINTING OVERALL

Safety overall manufactured in 100% fiber of microposite polypropylene breathable, high density with anti-static treatment. Available sizes: G (code 269), XG (code 268) and XXG. (code 267)

AIRLESS TIPS



LIGHT GREEN AIRLESS TIPS

Reversible airless tips with sealing kit.

Stainless steel rod, and tungsten carbide hole, nylon support.
Durable and easy to reversal for cleaning.
Diameter of the rod: 11,1mm.
Max.: 5,000 psi (345 bar).



FINE FINISH LOW PRESSURE AIRLESS TIPS

Reversible airless tips with sealing kit.

Low pressure line airless tips differ from ordinary nozzles because they use less work pressure, which allows a more standardized painting and fewer mist generation (overspray). Durable and easy to reversal for cleaning. Diameter of the rod: 11,1mm.
Max.: 5,000 psi (345 bar).



HIGH RESISTANCE AIRLESS TIPS (UHD)

Reversible airless tips with sealing kit.

Stainless steel rod, and tungsten carbide hole, nylon support. Durable and easy to reversal for cleaning.
Diameter of the rod: 11,1mm.
Max.: 7,250 psi (500 bar).

HIGH QUALITY AIRLESS TIPS

FOR A HIGH LEVEL
STANDARDIZED PAINTING



Airless Tips Table Orientation

Hole Size in Inches	Hole size in millimeters	Fan opening in centimeters								Flow		Application	Filter
		5-10cm	10-15cm	15-20cm	20-25cm	25-30cm	30-35cm	40-45cm	60-65cm	gpm	Litros/min.		
outlet	outlet	5-10cm	10-15cm	15-20cm	20-25cm	25-30cm	30-35cm	40-45cm	60-65cm	gpm	Litros/min.		
0,007	0,17	107	207	307						0,05	0,2	Stein and Fine Industrial Paints	150 mesh red
0,008	0,20	108	208	308						0,07	0,26		
0,009	0,22	109	209	309						0,09	0,33		
0,010	0,25	110	210	310	410					0,11	0,41		
0,011	0,28	111	211	311	411	511				0,12	0,45	Synthetic and Water Based Enamel	100 mesh yellow
0,012	0,30	112	212	312	412	512				0,15	0,59		
0,013	0,33	113	213	313	413	513	613			0,18	0,68		
0,014	0,35	114	214	314	414	514				0,21	0,8		
0,015	0,38	115	215	315	415	515	615			0,24	0,91	Latex, Acrylics and Sealers	60 mesh white
0,016	0,40	116				516				0,27	1,04		
0,017	0,43	117	217	317	417	517	617	817		0,31	1,17		
0,018	0,45					518	618			0,35	1,32		
0,019	0,48	119	219	319	419	519		819	1219	0,38	1,44		
0,020	0,50						620			0,43	1,63		
0,021	0,53	121	221	321	421	521		821	1221	0,47	1,78	Heavy Latex and Rubberized Inks	60 mesh white ou 30 mesh green
0,023	0,58		223	323	423	523	623			0,57	2,16		
0,025	0,63			325	425	525	625			0,67	2,54		
0,027	0,68			327		527				0,77	2,91		
0,029	0,73			329		529				0,9	3,41	Elastomeric, Primer, Pasta and Higher Density Materials	30 mesh green
0,031	0,78			331		531				1,03	3,9		
0,033	0,83					533				1,17	4,43		
0,035	0,89					535				1,31	4,96		

Legend: LOW PRESSURE AIRLESS TIPS NAUBER HIGH RESISTANCE AIRLESS TIPS

NAUBER[®]

MAQUINAS

“**Evolution** is what **moves us**,
the **result** is what **inspires us**”



2477, Marechal Castelo Branco St.,
Schroeder, SC, 89275-000, Brazil
Phone: +55 (47) 3374-5969
atendimento@nauber.com.br



Nauber Máquinas



[naubermaquinas](https://www.facebook.com/naubermaquinas)



[naubermaquinas](https://www.instagram.com/naubermaquinas)



www.nauber.com.br



atendimento@nauber.com.br

2023

www.nauber.com